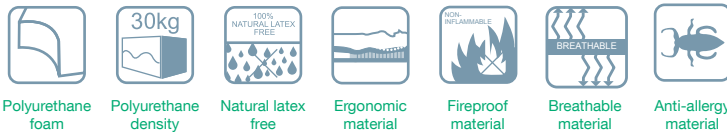
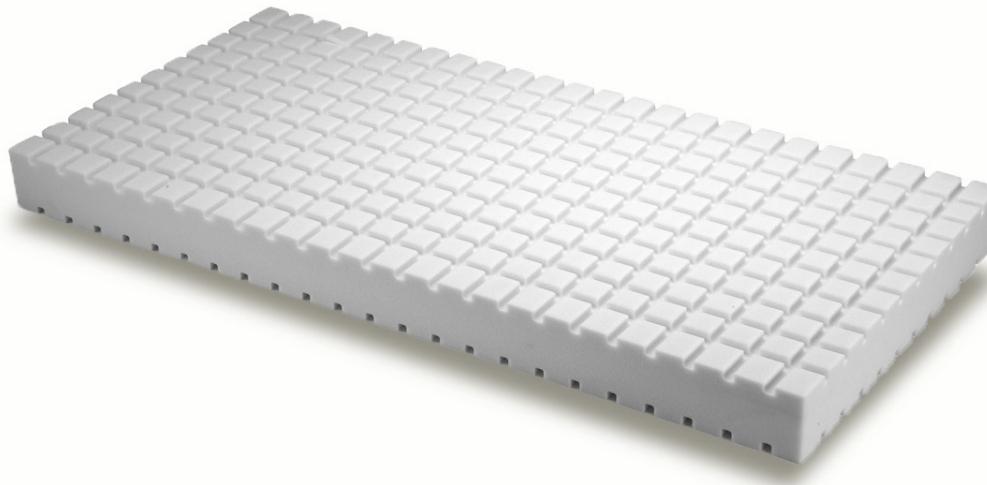


# Density200 Mattress



## + Mattress characteristics

Mattress specially designed for ambulatory or hospital patients with low ulceration risk, as well as for the treatment of early stage ulcers and sores.

## + Core



- 1 High resiliency monolithic freefoam core (30 kg/m<sup>3</sup>), conformed and with 14 cm. core height.

## + Core characteristics

- PCube system, with independent compression mode until it is adapted to the patient body, allowing the pressure points reduction and surface friction; the lower layer adapts to the bed improving the section movements.
- Reversible and symmetric core due to the PCube system design on both sides that allows using indistinctly the head or feet areas.

## + Technical specifications

Core height	14 cm.
Core weight	4 kg.
Maximum patient weight (MPW)	190 kg.
Ulceration risk	IV - Low
Available widths	80 / 85 / 90 cm.
Available lengths	180 / 190 / 200 cm.

- The gap between cubes promotes the air passage, avoiding the humidity creation reducing the maceration risk and increasing the breathability.
- Fireproof core according to the “Furniture and Furnishings (Fire)”, BS 5852:2 CRIB2, UNE EN 597-1 and EN 597-2 regulations.

